

Report No. : PN:EE:1456003527

ISSUE DATE : 05/01/2024



AP LANKA (PVT) LTD  
416/5, LEYLAND ROAD  
HOMAGAMA-10200  
LK

CONTACT PERSON : HARSHA DULIP

THE FOLLOWING SAMPLE(S) WAS/WERE SUBMITTED AND IDENTIFIED BY/ON BEHALF OF THE CUSTOMER AS :

SAMPLE DESCRIPTION      AXEL HDGA CABLE TRAYS  
PART NO -783 023

SAMPLE RECD ON      30/11/2023

TESTING PERIOD : 01/12/2023-31/12/2023

TEST(S) REQUESTED      SALT SPRAY TEST AS PER IEC 61537 – CLAUSE 14.2.3 – CLASS 7

**SALT SPRAY TEST :**

TEST METHOD : ISO 9227 : 2022 / ISO 10289 : 1999 /As per customer request.

Test Condition :

Sr. No.	Parameter	Specification
1	Salt Solution Concentration	(50 ± 5) g/l
2	Chamber Temperature	(35 ± 2 )°C
3	pH of fog solution	6.5 – 7.2
4	Fog Collection	1.5 ± 0.5 ml/hr
5	Test duration	720 Hours

No.of Test Specimens : 01

Requirement : The sample shall have passed the test,If the corrosion of the surface,according to rating 4 of  
ISO 10289 : 1999 has not exceed.



Observation :

Test Duration	Observation
24 hrs	No visual corrosion.
48 hrs	No visual corrosion.
72 hrs	No visual corrosion.
96 hrs	No visual corrosion.
120 hrs	No visual corrosion.
144 hrs	No visual corrosion.
168 hrs	No visual corrosion.
192 hrs	No visual corrosion.
216 hrs	No visual corrosion.
240 hrs	Red rust on hole and edges.
264 hrs	Red rust on hole and edges.
288 hrs	Red rust on hole and edges.
312 hrs	Red rust on hole and edges.
336 hrs	Red rust on hole and edges.
360 hrs	Red rust on hole and edges.
384 hrs	Red rust on hole and edges.
408 hrs	Red rust on hole and edges.
432 hrs	Red rust on hole and edges.
456 hrs	Red rust on hole and edges.
480 hrs	Red rust on hole and edges.
504 hrs	Red rust on hole and edges.
528 hrs	Red rust on hole and edges.
552 hrs	Red rust on hole and edges.
576 hrs	Red rust on hole and edges.
600 hrs	Red rust on hole and edges.
624 hrs	Red rust on hole and edges.
648 hrs	Red rust on hole and edges.
672 hrs	Red rust on hole and edges.
696 hrs	Red rust on hole and edges.
720 hrs	Red rust on hole and edges.

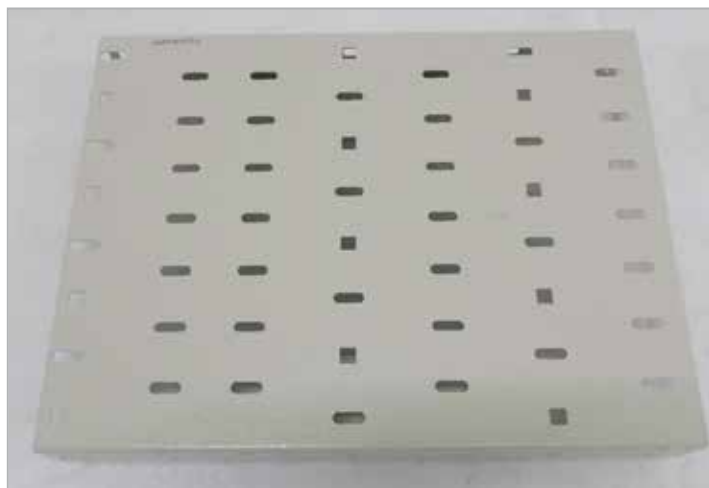


Evaluation as per ISO 10289 : 1999 on basis of dot Charts.

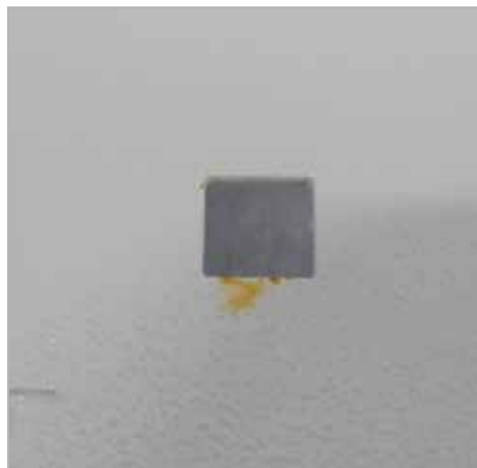
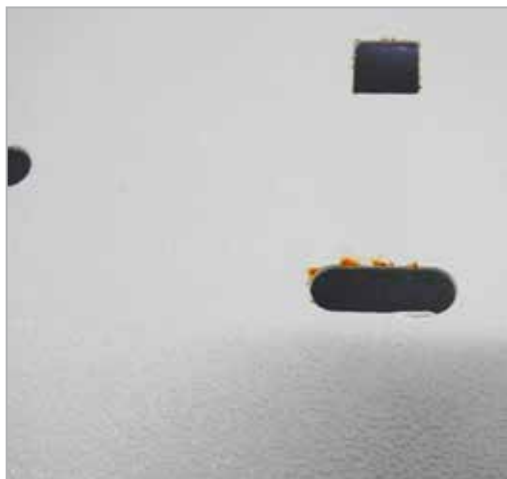
The protective rating ( $R_p$ ) of the coating = 10

The appearance rating ( $R_a$ ) of the coating = 10

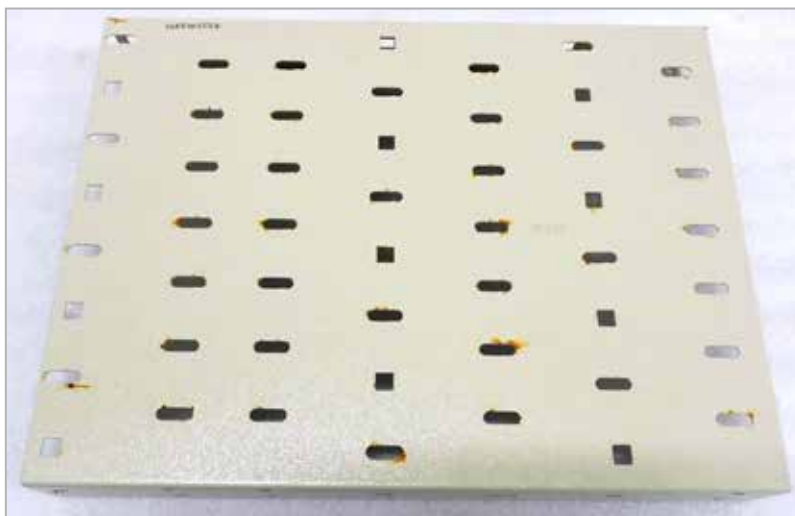
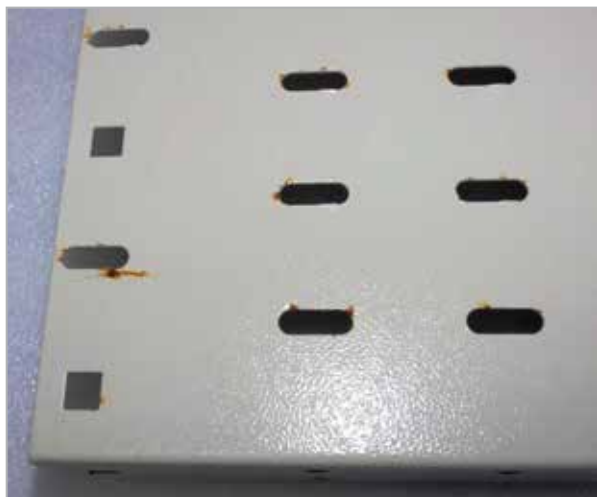
Photographs :



Before test



After 240 hrs (close up)



After 720 hrs

Report No. : PN:EE:1456003527

ISSUE DATE : 05/01/2024



**Remark :** As per standard 10289 edge defects occurring with in 5 mm of the edge of a specimen may be noted in the report, but should not normally influence the numerical rating.

**Conclusion :** Tested sample meets the requirement.

**Note :** Test performed as per the conditions given by the customer.  
Conclusion reported considering the specifications given by the customer.

\*\*\*END OF REPORT\*\*\*

Confidential Business Information

Niles P Kusal

Authorised Signatory

Email your Test Report Related Enquiries at [Feedback.trp@sgs.com](mailto:Feedback.trp@sgs.com)